

An introduction to the...

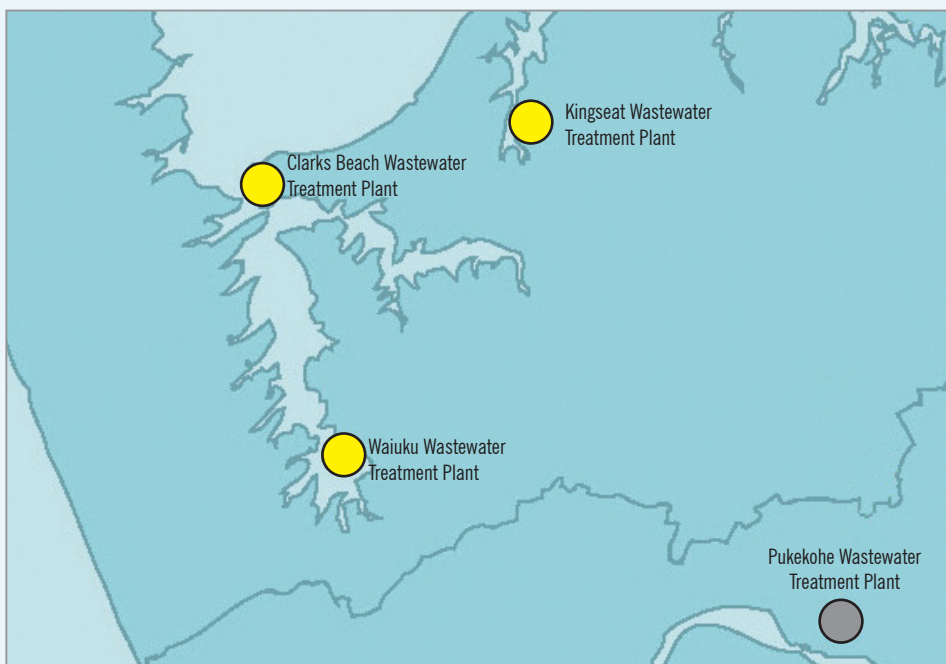
South-West Wastewater Servicing Project

In the coming years we're expecting more people to move to the Franklin area. As Franklin grows so does the demand for public services such as water and wastewater. Most of the communities in this area were recently connected to the water supply from the Waikato Water Treatment Plant in Tuakau. Now we are looking at how we can best provide wastewater services.

Project overview

The South-West Wastewater Servicing Project will look at the different ways we might be able to handle and treat the extra wastewater generated from growing communities in the Kingseat, Clarks Beach, Glenbrook Beach and Waiuku areas. We'll also be taking into consideration how the growth in the other areas of Franklin (for example Pukekohe) may need to be accounted for, but at the moment our focus will be on providing wastewater services to the communities mentioned above.

This project will be looking to identify the 'best practicable option' to manage the wastewater generated in these areas. This option will consider and balance environmental, cultural, operational and economic factors.



BEST PRACTICABLE OPTION...WHAT DOES THAT MEAN?

In simple terms, the best practicable option for the South-West Wastewater Servicing Project means the 'best option'.



This would be the wastewater treatment and disposal method that balances a number of objectives, is affordable and protects our communities while also preventing harm to the environment and cultural values.



What are we aiming to achieve?

The aim of the project is to work in partnership with the community and mana whenua to identify the best practicable option to provide wastewater services for the Waiuku, Clarks Beach, Glenbrook Beach and Kingseat communities. In doing this we aim to:

- keep our communities healthy
- protect our environment, particularly the water quality of the Manukau Harbour
- provide a solution that will be affordable for users now and in the future, given the expected growth in the area
- recognise and provide, where possible, for the cultural and spiritual objectives of local mana whenua
- retain flexibility for future, sustainable, longer-term solutions.

.....



The principle of Kaitiakitanga

Kaitiakitanga (guardianship) provides the foundation for environmental controls and customary practices for whanau, hapu and iwi. It is an inherent obligation to be custodians, protectors and guardians of traditional interests, taonga (possessions) and resources.

Mana whenua desire to manage resources in ways that respect, conserve, and sustain the health and wellbeing of taonga, while ensuring a sustainable balance between the use of resources by present generations and their availability for future generations.

We've come a long way

As the number of people living in Franklin and the Auckland region as a whole has increased, wastewater disposal became an increasingly challenging problem. Traditionally, people used to have long-drops in their backyards. In built-up areas, toilet waste was collected from individual households by a horse-drawn carriage at night, called the 'night soil' collection.



'Night soil' collection.

Over time long-drops were replaced with septic tanks and in urban areas simple wastewater systems were constructed. These early wastewater systems collected wastewater as well as stormwater – some of these old pipes still exist in older parts of Auckland today.

Early wastewater treatment plants were mostly large ponds, where sunlight and microbes did the work of 'cleaning up' the wastewater before it was discharged to streams, rivers or the sea. But even this basic treatment was a huge improvement over discharging 'raw' wastewater to the environment, and improved public health in growing urban and rural communities.

Today new technology can treat wastewater to a very high quality. It is even possible to do this to a drinkable standard, but such treatment is very energy-intensive and expensive to build and maintain. Our challenge is to find the right balance – in effect the best practicable option.

Mangere Wastewater Treatment Plant.



How are we currently managing wastewater in South-West Franklin?

At present there are three wastewater treatment plants servicing communities in this area. These are located in Waiuku, Clarks Beach and Kingseat. There is also a small private treatment plant at the former Kingseat Hospital that services the residents and activities on the premises.

These treatment plants are all operating effectively at the moment, but as the population grows we need to think about how we are going to manage the additional wastewater.



Waiuku Wastewater Treatment Plant.

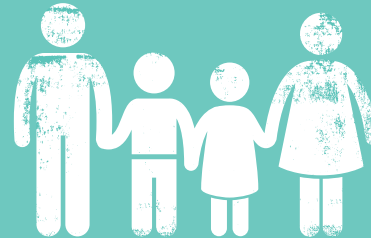


Clarks Beach Wastewater Treatment Plant.



Kingseat Wastewater Treatment Plant.

WORKING WITH YOU



Decisions made regarding wastewater servicing are important, not just for the current communities of Kingseat, Clarks Beach, Glenbrook Beach and Waiuku, but for future generations too.

We are committed to working closely with the community to identify the best practicable option to service needs now and into the future. The best practicable option will contribute to ensuring that these are communities where people continue to be proud to live, work and play.

Throughout the project there will be opportunities to provide your feedback and ask our team questions about the wastewater treatment options being looked at and their effects on the environment. If you have any questions, please don't wait for these scheduled opportunities – contact us any time.

If you would like to receive updates on the project please email us at southwest@water.co.nz with the subject line 'sign me up' to register or give us a call on 09 442 2222.



What happens next?

We've made a start by looking at all the possible options to manage wastewater in the area. If you have any suggestions please email us – at this early stage all ideas are good ideas!

We'll also be doing a range of technical and environmental investigations. These will help assess if the option can be built, what each option may cost and their potential effects on the natural environment and cultural values.

Following these assessments we'll come up with a list of feasible options, and would really like to hear your thoughts about them. We'll then do some more assessments and identify the best practicable option, and again invite your thoughts and feedback. After you have provided your feedback a decision will be made to confirm the option to be consented and constructed.

Contact us

For further information or queries regarding the project please contact us on:

Email: southwest@water.co.nz

Phone: 09 442 2222

Or visit www.watercare.co.nz – 'work in your area'.



DID YOU KNOW?

South-West Franklin is currently serviced by

**THREE
WASTEWATER
TREATMENT
PLANTS**

at Clarks Beach, Waiuku and Kingseat



The Clarks Beach plant

**HANDLES
WASTEWATER
FROM
692 HOUSES AND
BUSINESSES**

including Waiu Pa and Glenbrook Beach.

The Waiuku plant treats wastewater from

**2,943 HOUSES
AND BUSINESSES.**

Kingseat is one of the **SMALLEST
WASTEWATER
TREATMENT PLANTS
IN THE ENTIRE
AUCKLAND REGION** – it services only 45 houses.